

# OFFICE CONDO FOR LEASE

3624 OCEAN RANCH BLVD - OCEANSIDE, CA



## PROPERTY HIGHLIGHTS

- 2,012 SF office condo
- Corner location with abundant glass line on both levels
- Good mixture of collaborative space and private offices
- Great location with quick access to I-5, Hwy 76 and Hwy 78
- Close proximity to numerous restaurants and hotels
- Adjacent to outside seating patio area
- **Lease Rate: \$1.50 PSF & Utilities**



**RUSTY WILLIAMS, SIOR**  
760.644.1887  
rwilliams@lee-associates.com  
CalDRE Lic#01390702

**CHRIS ROTH**  
760.696.2273  
croth@lee-associates.com  
CalDRE Lic#01789067

**STEVE CROCKETT**  
760.448.2439  
scrockett@lee-associates.com  
CalDRE Lic#01027524

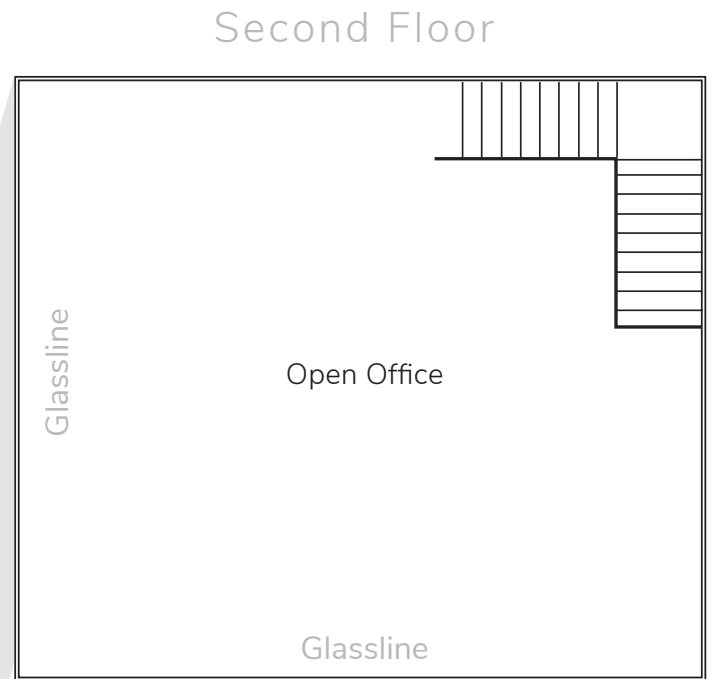
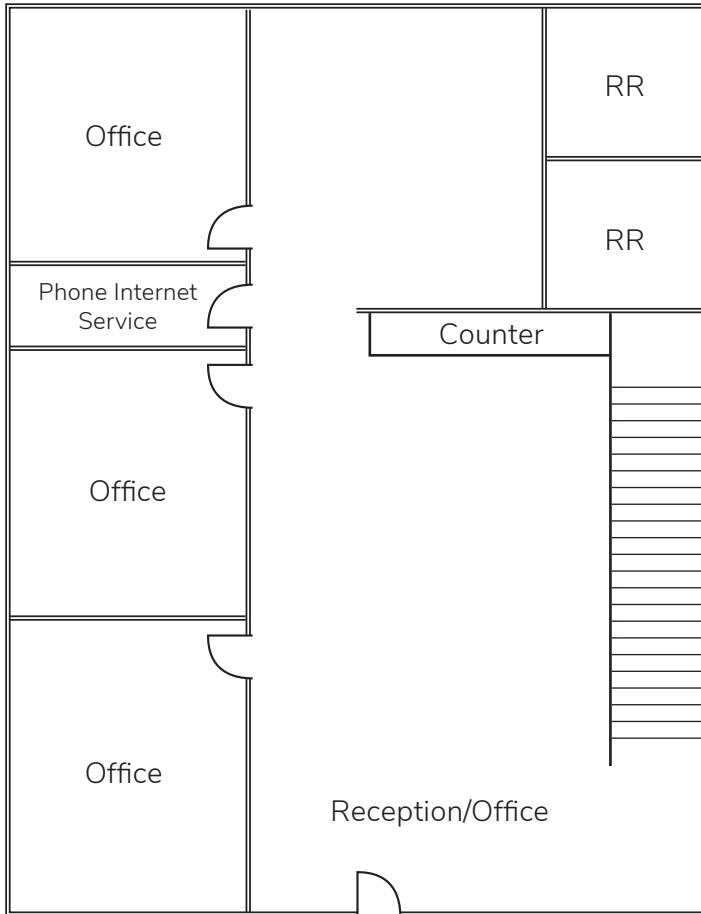
**JAKE RUBENDALL**  
760.448.1369  
jrubendall@lee-associates.com  
CalDRE Lic#02037365

All information furnished regarding property for sale, rental or financing is from sources deemed reliable, but no warranty or representation is made to the accuracy thereof and same is submitted to errors, omissions, change of price, rental or other conditions prior to sale, lease or financing or withdrawal without notice. No liability of any kind is to be imposed on the broker herein.

# OFFICE CONDO FOR LEASE

3624 OCEAN RANCH BLVD - OCEANSIDE, CA

## FLOOR PLAN



All information furnished regarding property for sale, rental or financing is from sources deemed reliable, but no warranty or representation is made to the accuracy thereof and same is submitted to errors, omissions, change of price, rental or other conditions prior to sale, lease or financing or withdrawal without notice. No liability of any kind is to be imposed on the broker herein.